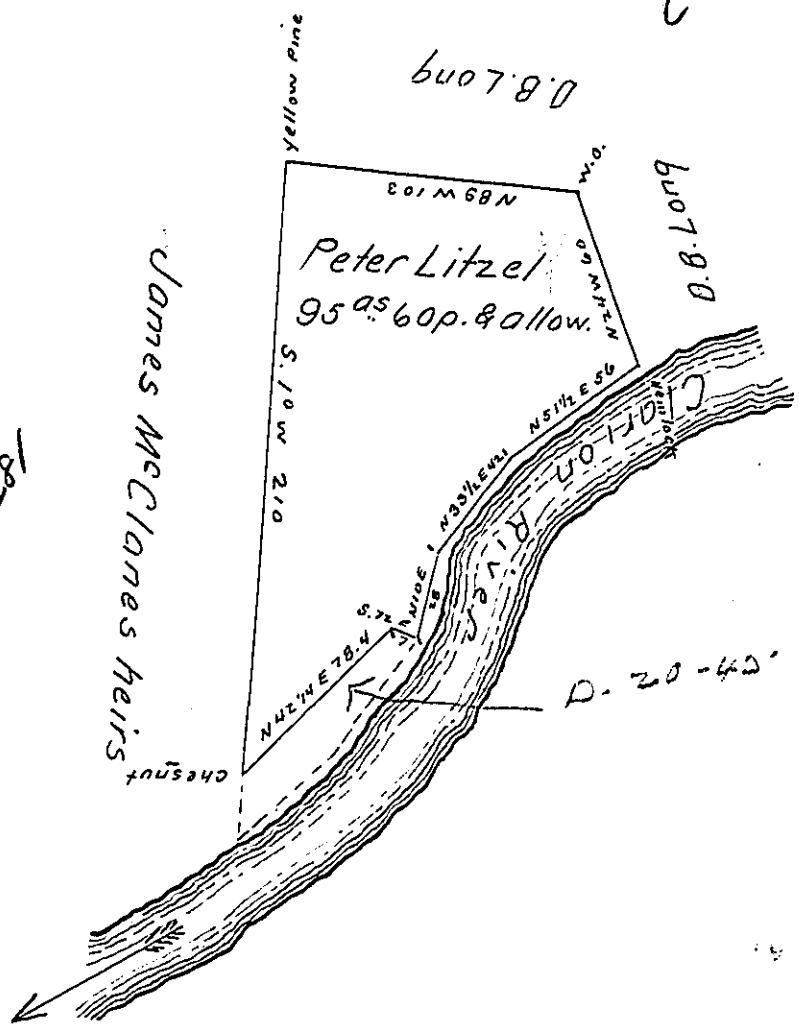


Field notes

- S. 72 E 7
- N. 10 E .28
- N. 33 1/2 E 42
- N. 51 1/2 E 56
- N. 24 W 60
- N. 89 W 103
- S 1 W 210
- N. 42 1/4 E 78.4

C-134-28

C-45-161



The above is a plot of a piece of Land Situate in Beaver Township Clarion County Penna. Adjoining Lands of D. B. Long on the North East and North. James McClanes heirs on the West and Clarion River on the South and South East. Containing Ninety five Acres and Sixty perches and Allowance of Six per Cent &c. Surveyed in pursuance of a Warrant dated the 6th day of December A. D. 1855. granted to Peter Litzel and to me directed Surveyed and Located for the aforesaid Peter Litzel The 18th day of December 1855

Jesse Seats C.S.

To J. Porter Brawley Surveyor Genl.

IN TESTIMONY that the above is a copy of the original remaining on file in the Department of Internal Affairs of Pennsylvania, made conformably to an Act of Assembly approved the 16th day of February, 1833, I have hereunto set my Hand and caused the Seal of said Department to be affixed at Harrisburg, this sixth day of September 1905,

Isaac B. Brown
Secretary of Internal Affairs.